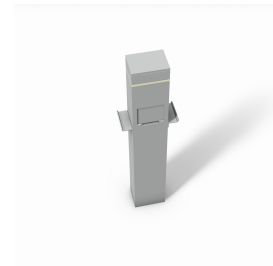


REVIT CONTENT GUIDE

Manufacturer:	Wiremold
File:	Charging_Station-Wiremold-Accent_Light.rfa
Type Catalog:	Charging_Station-Wiremold-Accent_Light.txt
Rendering file:	Not Applicable
Schedule file:	Schedule - Charging_Station-Wiremold-Accent_Light.rvt



Instance Properties

Construction	
Door is Clear	<input type="checkbox"/>
Door is Locking	<input type="checkbox"/>
Door is Standard	<input checked="" type="checkbox"/>
Has AC Communication Kit	<input type="checkbox"/>
Has Shelf Set	<input type="checkbox"/>
Dimension	
Depth*	6.000
Height*	46.500
Width*	8.000
Identity Data	
Accessory Part Number*	USE TYPE CATALOG
Equipment Number*	
Part Description*	USE TYPE CATALOG
Part Number*	USE TYPE CATALOG

Type Properties

The family contains the following 1 types:
USE TYPE CATALOG (Values for this type are shown below)

Adsk Model Properties	
Temperature Range Maximum	140.00 °F
Temperature Range Minimum	-941.34 °F
Electrical	
Apparent Load*	0.00 VA
Idle Power Draw	7.00 W
Load Classification*	Other
Number of Poles*	1
Power Factor*	1.000000
Voltage*	120.00 V
Identity Data	
Copyright*	Copyright © Wiremold
Date Created*	February 21, 2017
Date Modified*	February 21, 2017
Description*	See Part Description
Equipment Abbreviation*	CS
Family Version*	1.0
Manufacturer*	Wiremold

Identity Data	
Model*	See Part Number
Model Disclaimer*	Contact Wiremold for more information
Product Documentation Link*	http://www.legrand.us/-/media/products/resources/wiremold-products/outdoor/charging-stations/wm-cutsheet-chargingstations_ed1765r2.ashx
Product Page URL*	USE TYPE CATALOG
Type Image	-1
URL*	http://www.legrand.us/wiremold.aspx#.UCGpxKPdkcs
Light Photometrics	
Initial Color Temperature*	4000K
Lumens*	457.00 lm
Materials	
Product Material*	6457

Half-tone text in the property tables indicates that the value is locked from editing.

*Indicates Shared Parameter and can be scheduled

Loading and Placing into the Project

One "Electrical Fixtures" family is supplied and may be loaded into a Revit project through all traditional methods. This family loads in with a Type Catalog which allows for specific types to be loaded into the project. The type catalog references an associated .txt file with the same name as the loading family. The Pedestal requires a work-plane host to be placed within the project (i.e. floor). Also, ensure that the visibility settings within the project are modified to have the Electrical Fixtures category visible.

Project Behavior

Within the type and instance properties dialogues, the user will find useful information for scheduling purposes such as Height, Width, Depth, Idle Power Draw, and other unique properties of the model. In "Identity Data" the user will find information specific to Wiremold and the model, i.e.: family revision information, Wiremold copyright information, part description, product URL and other specific data. *See scheduling description below. The family has several instance checkbox options that allow for the configuration of the pedestal. These configurations include options for different door types along with options for extra kits and shelves. Note that only one door option can be selected. Multiple selection will cause an error. Conduit may be drawn from the connection point applied to the model.

Empty electrical parameters exist for entering in electrical requirements. These parameters are mapped to the connection points.

Instance Parameter

In the "Instance Parameters", the user has the following options to modify:

- Equipment Number - For tagging separately placed instances.
- Has Shelf Set - For applying the shelf option to the pedestal.
- Has AC Communication Kit - For applying the AC communication kit option to the pedestal.
- Door is Standard - For selecting the standard door option.
- Door is Locking - For selecting the locking door option.
- Door is Clear - For selecting the clear door option.

Type Parameter

Each type represents a manufactured product. Therefore, the type parameters should not be modified by the user. Please note:

- Product Documentation Link - Directs a webpage to the products online listing.
- Equipment Abbreviation - For filtering schedules. *See scheduling description below.

Visibility

For best performance, all model geometry is turned off in Plan View and represented through masking regions and symbolic/model lines that update automatically when a user changes types.

Rendering

When the family file is loaded into the project, standard Wiremold materials are imported. These may be modified, though ensure that the modification selection matches an actual manufacturer supplied option.

Schedule Creation

Wiremold products may be scheduled utilizing the schedule view in the given project file. Select and copy (Ctrl-C) the schedule from the sheet view and paste it (Ctrl-V) into a sheet in your project. The schedule filters are set to look for only those units designated with Manufacturer as “Wiremold” and Equipment Abbreviation as “CS”. The schedules contain special functionality for displaying the configured order numbers of the different selected types.